


TURTLE TILES

 WALK SAFE SYSTEMS™ AND COMPARTMENT MATTING

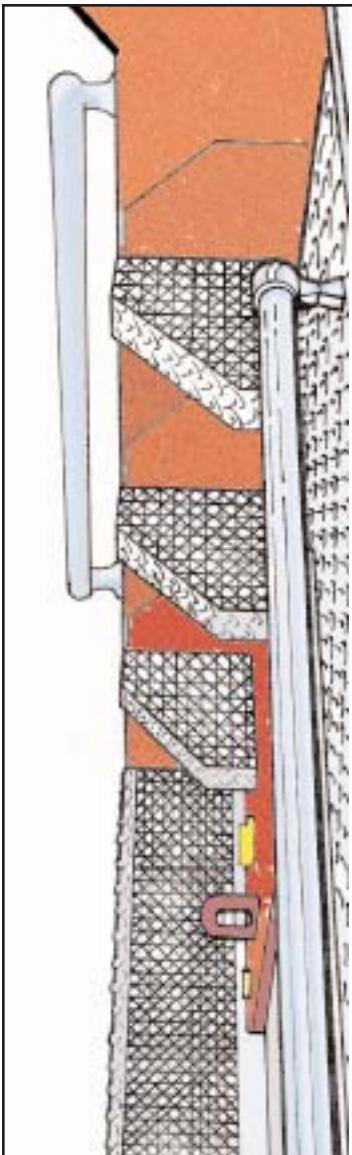
TURTLE TILES MEET OR EXCEED MOST NFPA AND OSHA FRICTION RECOMMENDATIONS

The new NFPA Coefficient of Friction (COF) for walking surfaces is a result of the dramatic increase of slips and falls off of emergency vehicles in the last few years.

Turtle Tiles can be applied over virtually any surface on a vehicle. Dura Coat can be self-applied to vehicle diamond plate, over rusty metal and other surfaces such as fiberglass, wood or masonry by brush, roller or sprayer. Dura Coat can be used as a bed liner and is similar in chemistry to popular bed liner coatings. Turtle Tiles can be mounted to any surface using the countersunk holes in the corners of the tiles.

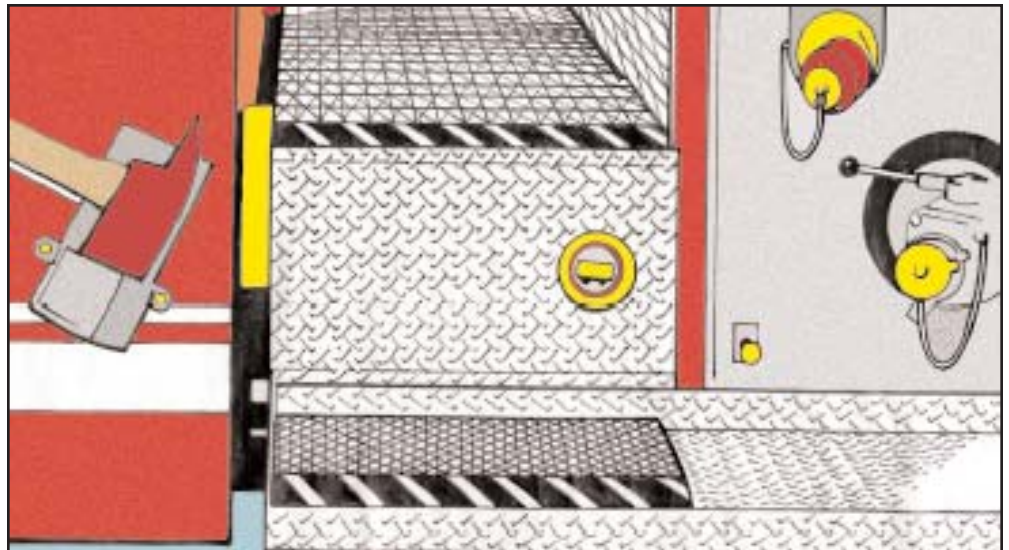
*For copies of test results call us or send a fax to 1-800-437-1603

STEPS/REAR BUMPER



Turtle Grit Top Tiles give you a high COF for any surface, such as steps and rear bumpers.

WALK THROUGH/RUNNING BOARDS



Running boards and walk throughs shed water when covered with Turtle Tiles, which feature built-in water channels.

REAR BUMPERS

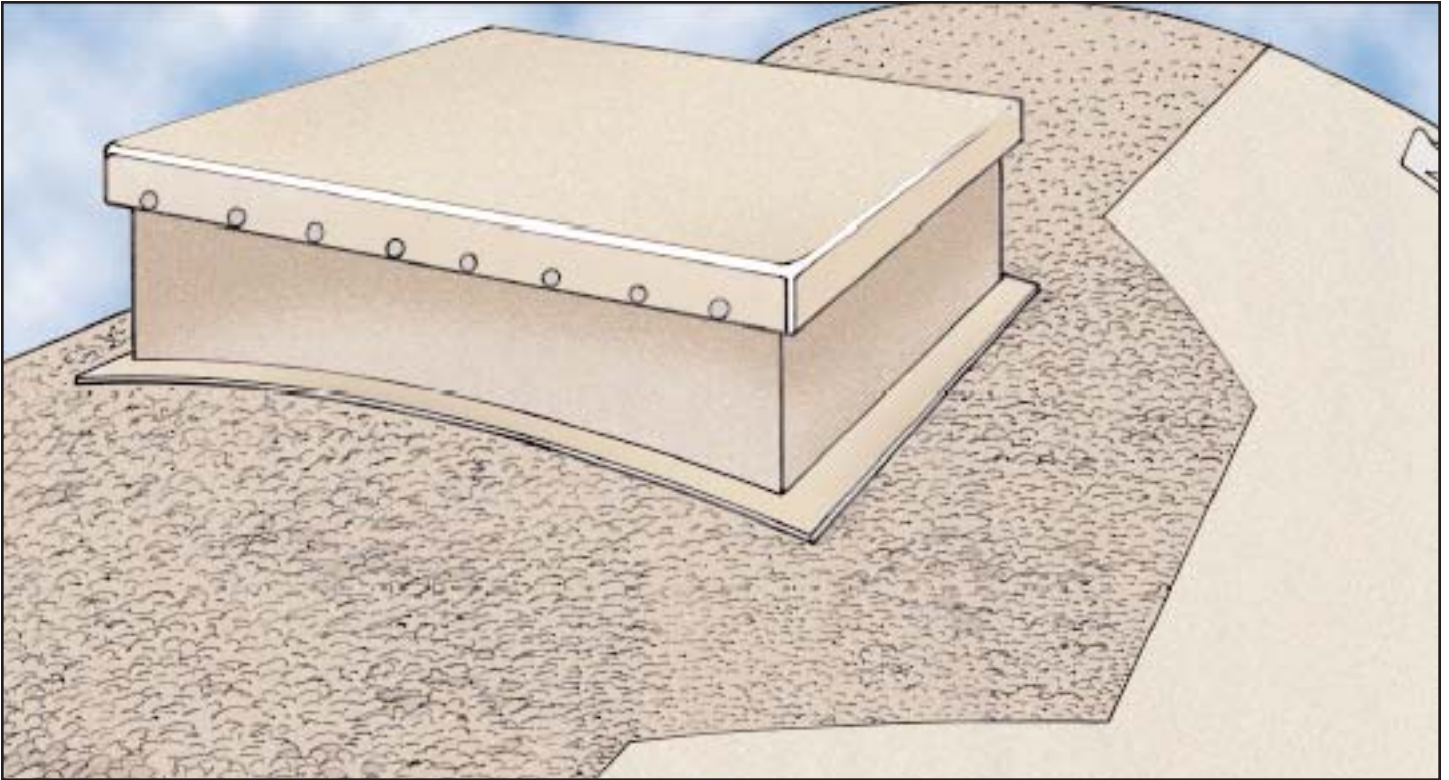


Rear steps can be made safer with Turtle Tiles.

Walk Safe Systems

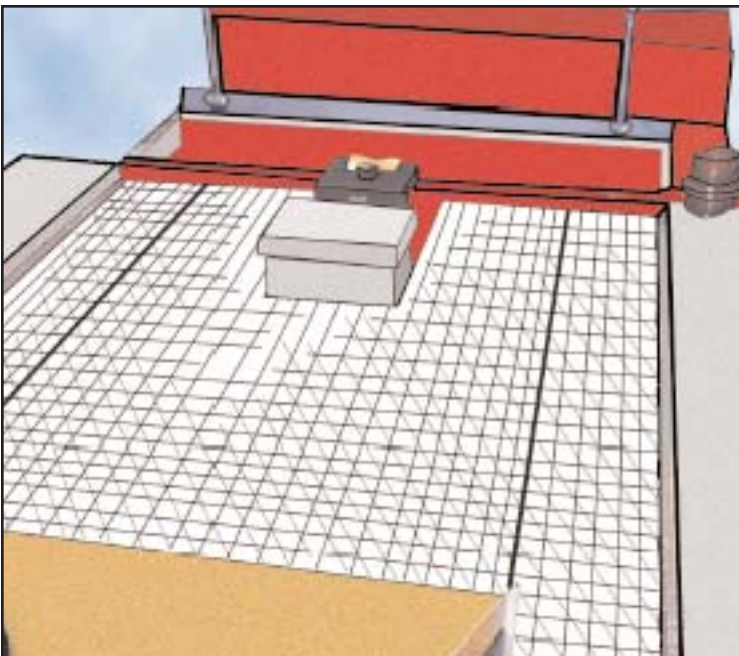
THE SURE-FOOTED COVERING FOR EMERGENCY VEHICLES

TANKER TOPS



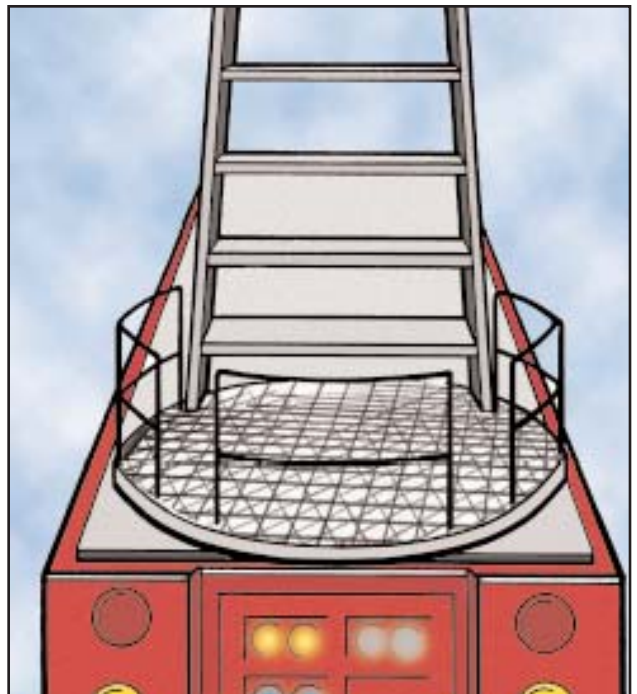
The convex surfaces of Tanker Tops lend themselves to the use of Turtle Dura Coat coating. Dura Coat eliminates the need for expensive diamond plate on top of apparatus. Self-applied Dura Coat is the most ECONOMICAL method of getting a slip-resistant surface.

TOP DECK



For safety's sake, a tiled TOP DECK with slip-resistant Turtle Tiles is a must.

AERIAL PLATFORMS



Dura Coat or Turtle Tiles on AERIAL PLATFORMS insure sure footing.

COMPARTMENT MATTING

SPEC THE BEST!

HEAVY DUTY INDUSTRIAL GRADE

Large footed 3/4" thick underside won't scratch compartment paint!



Why Turtle Tiles?

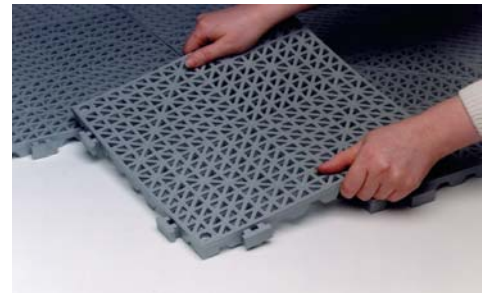
- 3/4" thick •
- Heavy duty industrial grade •
- Recycled material •
- Won't scratch compartment paint •



Ramps are optional.

MOUNT BRACKETS & CLIPS DIRECTLY TO TILE!

LESS HOLES DRILLED IN NEW APPARATUS!



Easy to cut!

TECHNICAL DATA

MATERIAL: Recycled PVC

SIZE: 12' X 12' X 3/4" high - 1/2" high for ambulance compartments

SUPPORT: 77 sturdy feet provide even support

LOCKS: 8 locks, 2 sides with 2 male T tabs, 2 sides with 2 female T slots

DRAINAGE: Grid surface design allows for maximum drainage and traction

WEIGHT: 1.5 lbs

FEATURES & BENEFITS: Fungus and mold resistant; uses ultraviolet stabilizers; standard black color (19 other colors available); Five-year replacement warranty

CHEMICAL RESISTANCE: Turtle Tiles are resistant to most common chemicals, grease and solvents.



Made from Recycled Plastics



Printed in USA on Recycled Paper



TURTLE PLASTICS

7400 Industrial Parkway • Lorain, Ohio 44053

Phone 440/282-8008, Ext. 209

Fax 800/437-1603 or 440/282-8822

www.turtleplastics.com • E-mail: fireinfo@turtleplastics.com