



TURTLE PLASTICS®

Safety & Stabilization Product Solutions

OSHA Compliant

Load Rated · Ergonomic · Reliable

Recycled Plastic · Made in the USA · Washable · Warrantied

About

For over 40 years, Turtle Plastics has been manufacturing (S)Safety, (H)Health and (E) Environmental products made in the USA from 100% recycled plastic. Trusted by EH&S leaders in many industries to help keep their workforce safe, especially when stabilization of machinery or equipment is required during lifting operations. Turtle Plastics' brands include Dura Crib, Dura Stat, Dura Blend Lumber and Turtle Tile. Dura Crib products are interlocking blocks, pads and chocks. These products are load-rated and when used correctly can provide a stable platform to assist in compliance of "lock out/tag out" of stored energy created by pneumatic tools or hoisting equipment during lifting operations. Dura Stat products are smooth profile products used in static lifts such as loading rizers. Dura Blend Lumber is the recycled plastic alternative to wood timbers for creating frames/cradles for indoor or outdoor material storage.

Turtle Tile products are 12"x12" interlocking matting tiles. They come in various thickness, colors and finishes. They help to reduce slips, trips and falls when used as flooring.. All of our products are created with a reliable and repeatable formula, so each product performs in a superior manner, year over year. We welcome your inquiry to see how we, or one of our great authorized distribution partners can help you find workforce safety solutions.

Resources

Scan QR Code



Industry Solutions

- Aerospace ° Automotive ° Agriculture
- ° Commercial ° Construction
- ° Heavy Equipment ° Material Handling
- ° Military ° Mining ° Railroad ° Rescue
- ° Transportation ° Utility

Product Brands

- Dura Blend Lumber™
- Dura Crib™ Interlocking Blocks/Chocks/Pads
- Dura Stat™ Smooth Profile Products
- Turtle Tile™ Modular Matting

Programs/Services

- Complimentary Product Training
- Lunch & Learn Programs
- Facility Wood Audits
- Turtle Tile Measuring & Assembly Assistance
- Turtle Tile Matting Configuration & Customization
- Turtle Tile Recycling Program
- Turtle Tile Job Saw Program

Contact



1-800-756-6635



7400 Industrial Parkway Drive
Lorain, OH 44053-2054



orders@turtleplastics.com



turtleplastics.com

©052024 Turtle Plastics. All rights reserved.

ALL TURTLE PLASTICS® PRODUCTS
MADE IN USA

Popular Products



- THE SLAB®**
Mfg. Part #S612-24
- Dimensions: 6"x12"x24"
 - Working Load: 110,000kg/242,508lbs



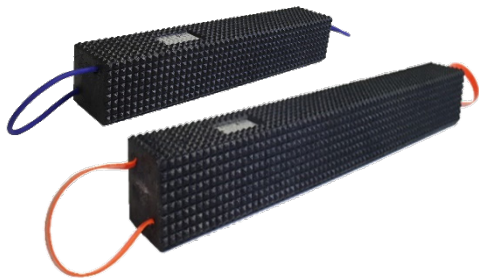
- BLACK DIAMOND CRIB®**
Mfg. Part #67HDC-30
- Dimensions: 6"x7"x30"
 - Working Load: 71,600kg/157,850lbs



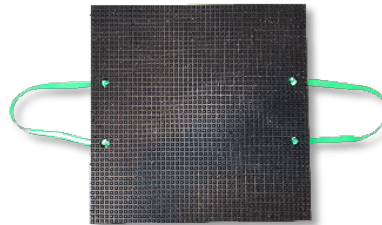
- PRIME CRIB®**
Mfg. Part # 67PC-24
- Dimensions: 6"x7"x24"
 - Working Load: 58,000kg/129,631lbs



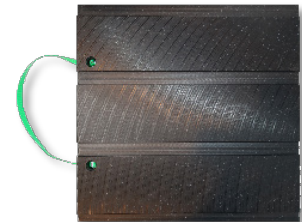
Introducing for 2024 to the Black Diamond Crib Block Family, these versatile blocks with four sided facades that interlock with many of the other Dura Crib brand blocks for rapid deployment.



- SUPER BLACK DIAMOND CRIB™**
Mfg. Part #:44HDC-24
- Dimensions: 4"x4"x24"
 - Working Load: 40,000kg/90,000lbs
 - Pat. Pending



- SLAB PAD TWO**
Mfg. Part # SP24-2
- Dimensions: 2"x24"x24"
 - PSI: 3,000



- PRIME CRIB STACK PAD**
Mfg. Part # PCP24
- Dimensions: 2"x 24"x 24"
 - PSI: 3,000

- SUPER BLACK DIAMOND CRIB XL™**
Mfg. Part #:44HDC-36
- Dimensions: 4"x4"x36"
 - Working Load: 69,400kg/153,000lbs
 - Pat. Pending.



- FORKLIFT BLOCKING KIT**
Mfg. Part #FBK



- MAINTENANCE BAY SERVICE KIT**
Mfg. Part # MBS KIT

Comprehensive kits for industrial equipment technicians maintaining or repairing material handling trucks or who work at industrial plants or shops that use forklifts, tugs and/or small machinery.

Turtle Tile™ - Open or Solid Surface Matting Solution

- Mfg. Part #1212 (Open Grid shown) with AF/AM Ramps
- Dimensions: 12"x12"x (3/4", 1/2" or 1")
 - Five available colors.
 - Matching or coordinating ramps.
 - Tiles and ramps easily interlock with two-tab design.
 - Ergonomically designed for workforce comfort.

